

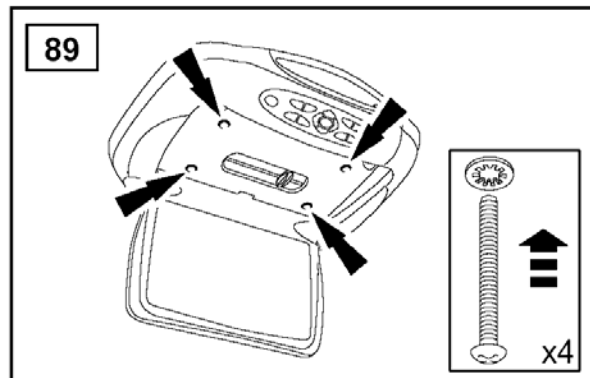
Woodman's Guide To Get Video On Your Touchscreen Display For LR3/Discovery 3 or Range Rover 2006+

This guide assumes that you have a LR3/Disco3 with the dealer fit DVD overhead system and want to get the video output from the DVD player on the front screen. Obviously parts of this guide can be adapted to suit as required, for example plugging a PS2 directly into the front screen.

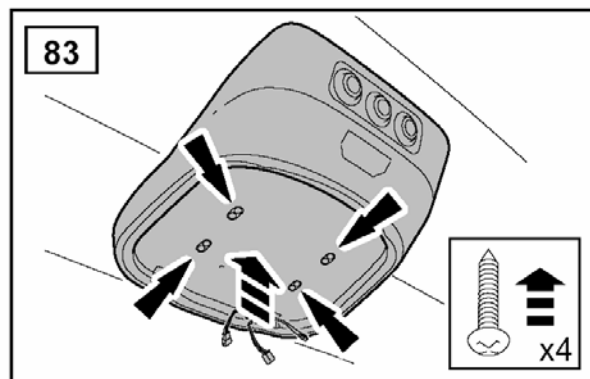
PHASE ONE - Preparing the overhead DVD player

First thing to do is to get the video output connection sorted for the DVD player and run through to behind the front screen.

You will need to remove the DVD player from the housing using the 4 screws which are revealed when the screen is down. Don't forget the cables need disconnecting too.



Then remove the other housing which is fitted to the roof:



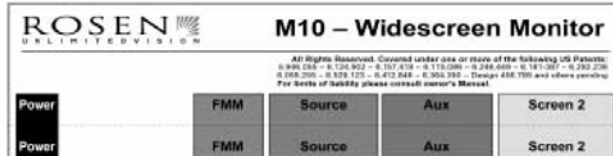
This now reveals a large opening where you can run the cable through the roof lining to the LHS of the vehicle along the door seal and down to the foot well where you can then leave the cable with enough slack to get up behind the front screen in a little while.



You need to use a screened cable; I actually used a piece of audio cable (you can see it hanging down) for mine at it seems to work fine. Some others may prefer to use coax cable, if this is the case it must be 75ohm – NOT 50ohm like you would use for your TV aerial.

Now on the LR DVD system (made by Rosen) you need to locate the second monitor out connector, if you remove the plastic cover over the DVD player (its about 8 small cross head screws) you can see all the white connectors where the cables plug in.

The one you need to be concentrating on is labelled below as Screen 2 (basically opposite end to the power connector):



Now on this multipin connector you need to only worry about 2 pins! Put the DVD player on your lap with the slot for the DVDs facing you (so the connectors are at the top). As you look at the screen 2 connector (furthest left) you need to look to the RHS of the connector, it's not the end 2 – it's the 2 BEFORE that! If you look at the picture below you can see which ones I mean, look at where the YELLOW plug is connected too.



This cable is available from Rosen, but to be honest I just used a 2 pin connector (like you find in the back of your CDRom drive in your computer to jump across the 2 pins I needed – worked a treat!

So now you just need to connect your newly installed wire to these 2 pins – NOTE that the cable screen goes on the LHS of the 2 pins as you look at the connector socket.

Before you move into phase 2 – best you reinstall the DVD system otherwise it's just a car full of plastic and screws!!

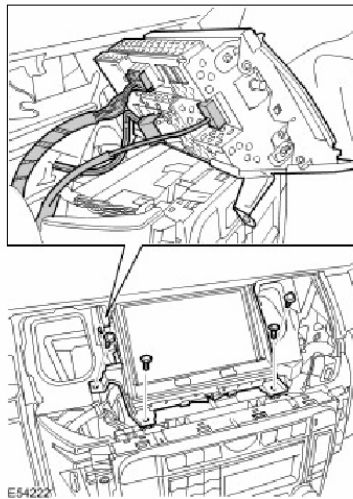
PHASE TWO – The Touchscreen!

Don't be afraid here – it's actually easier than it sounds, although you will need a steady hand with a fine tip soldering iron... but more of that later!

To remove the touchscreen you need to remove the outer plastic surround from the dash. Basically its one hand down each side of the centre console, grab the back of the surround and pull – start at the bottom though! Its held in by 4 clips, mine tended to pop off but they are just push fit and are real easy to get back on.

Sorry but this is the one bit I forgot to take a picture of! – Don't worry though, be brave and pull – it comes off really easy!

Once removed you should be able to remove the touchscreen using the 4 screws as shown, disconnect all the cables by pressing the release pin (make sure the ignition is off though!):



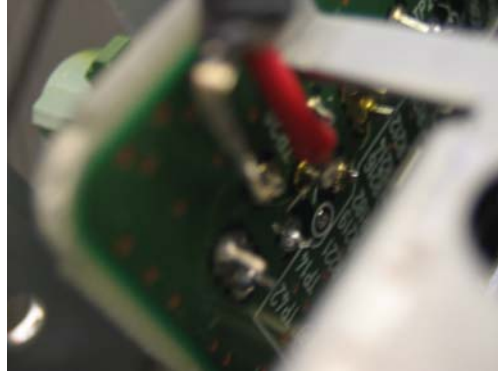
Once the screen is out you will see 3 different coloured connectors, they are the 3 different video inputs. Unfortunately I don't know what this connector is, I have tried to look for it but I still don't quite know. It is the same as the aerial connector on most VW/Audi's but I be buggered if I can find what it is!

Grab the cable from the foot well and route it up to where the touchscreen is located.... Now warm that soldering iron!

If you remove the top plate from the touchscreen it exposes the circuit where a steady hand can solder straight onto it... (if you find out what the connector is please email me!)

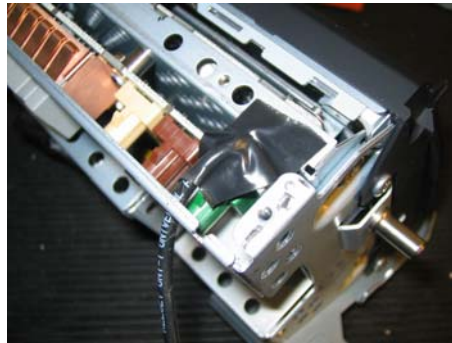


The core of the wire goes to the centre with the cable screen going to any one of the 4 points surrounding it. Here is an exploded view:



Depending on which one you solder to, depends on which input it is on the touchscreen. Green is TV/DVD, Brown is Companion Cam and Tan is Reversing Cam.

Once it's soldered up, I insulated it with a small bit of PVC to stop the shield touching the earth like this:



And I routed the cable out the back, so the finished result looked like this:



Once you have done all that, pop the screen back in with all the connections on the back reconnected and you should be in business!

BEFORE you try anything else, make sure you have all the connectors firmly back in place – especially the MOST bus. This is the 2 orange fibre optic cables – DON'T DAMAGE THEM..... EVER!

Phase 3 – The Test

To access the video inputs you must go through the Diagnostic Menu. Although this is a bit tedious due to the amount of key presses, the big advantage is that you get picture-in-motion without having to fiddle with any speed sensors on the car... thus the navigation still tracks your position whilst you are watching a DVD! (which obviously is difficult whilst driving anyway!)

- So start up the overhead DVD unit and play your favourite film!
- On the touchscreen, press the RIGHT HARD KEY to get to the home screen
- Press the "invisible" button which is at the very top in the middle of the screen for about 3 secs
- The press and hold the LEFT HARD KEY for about 5 secs (if at this point the map appears you didn't hold the invisible button down for long enough!)
- You then get asked to enter a Diag PIN number – this is 753
- Now you get various options depending on your car specification, but if you select VIDEO INPUT TEST and then TV/DVD you should get your picture up!

Worth noting that it always starts up in NTSC with a standard 4:3 aspect. This can be changed using the buttons on the bottom left of the screen but it won't remember the settings. I have used both NTSC and PAL discs on my DVD player and the drop down screen can auto select, but the front screen needs to be setup manually everytime!

If all that worked it should look like this:



So that's it guys! – Good luck, naturally all the normal disclaimers apply – you break anything and it's totally your fault!

Send notes of thanks to woodman438@wood-man.demon.co.uk

Happy viewing!