

FITTING MOST LOOM IN DISCOVERY 3 (PLUG AND PLAY LOOM)

First you need to remove the H-Trim from the car



Grab the H-Trim at either side



And pull forwards towards the front seats



Then lift it upwards and remove it



Next remove the 4 screws holding the nav screen in place



Pull the screen forward



Then swing it round so you can get at the orange most connector



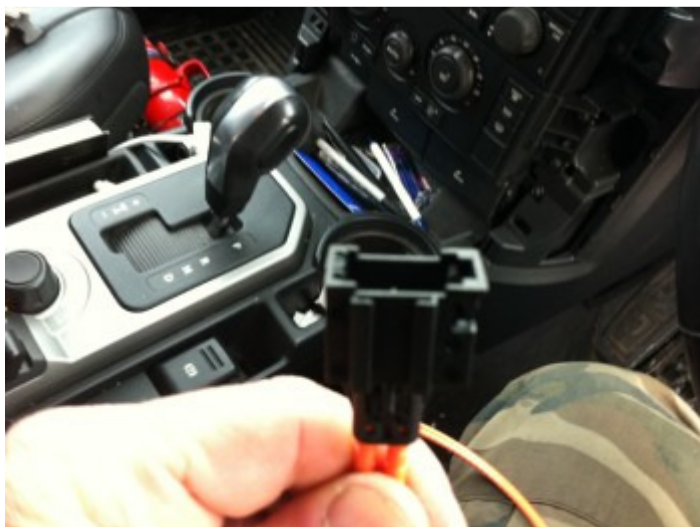
Undo the connector by pressing the clip in at the side and pull out the connector



Get the plug and play loom



The end with the green tape is the female end



Plug that into the end you removed from the nav screen (blue tape)



And the new blue end goes back into the sat nav screen



Put the nav screen back in place and make sure the end of the most cable (red tape) is coming out of the top left of the screen



Its going to end up coming out down here



Next , undo the 2 screws holding the passenger side trim in place (screws are just below the bottom glove box)



The carpeted piece thats against the center consul just pulls out ..its held in by one of these clips



Pull the trim out wards , and undo the connector for the light (just pulls outwards)



The bit that fits in the far left hand side is just a plastic tab , you will need to wiggle it to get it out ..or undo the trim thats holding it in place (undo the screw holding the bonnet release , and pull the trim towards the front seats)

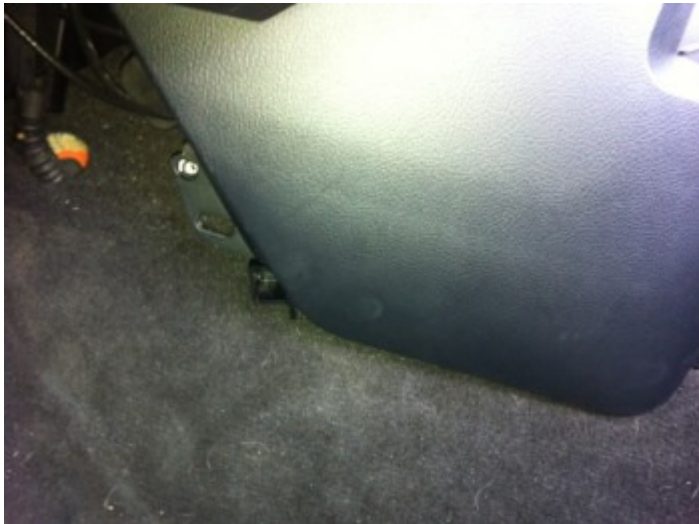


When its out the way , there is a screw holding the bottom part of the center consul in place .Remove this





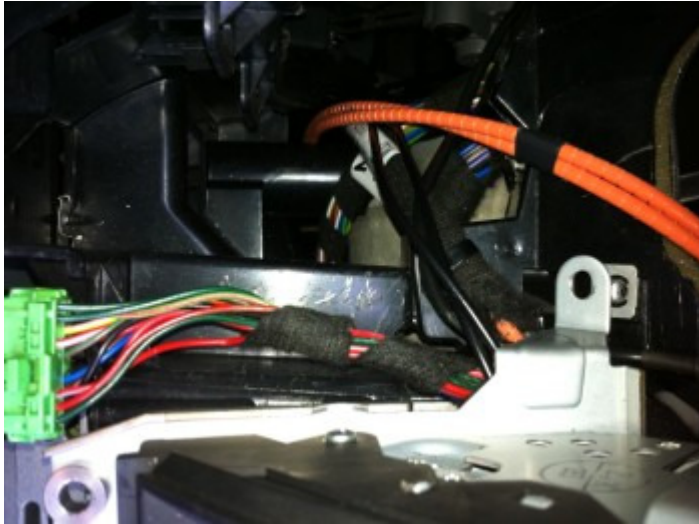
The Bluetooth module will fit up under there now



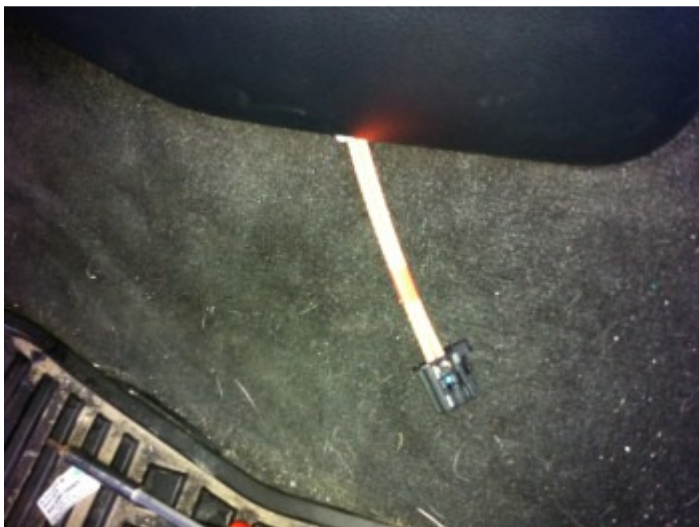
If you want , cut of the corner mounting lugs on the Bluetooth module , it will make it a bit smaller (but it does just fit without doing that)

Next you want to get the most cable down the center consul to were the module is going to go .

If you wedge out the bottom (were the module is going to go) you can then see the light and a path down with the most cable



So it ends up here





Power and ground

You can now see the bottom of the fuse box , This is were you need to take the power for the module from .

I use one of these



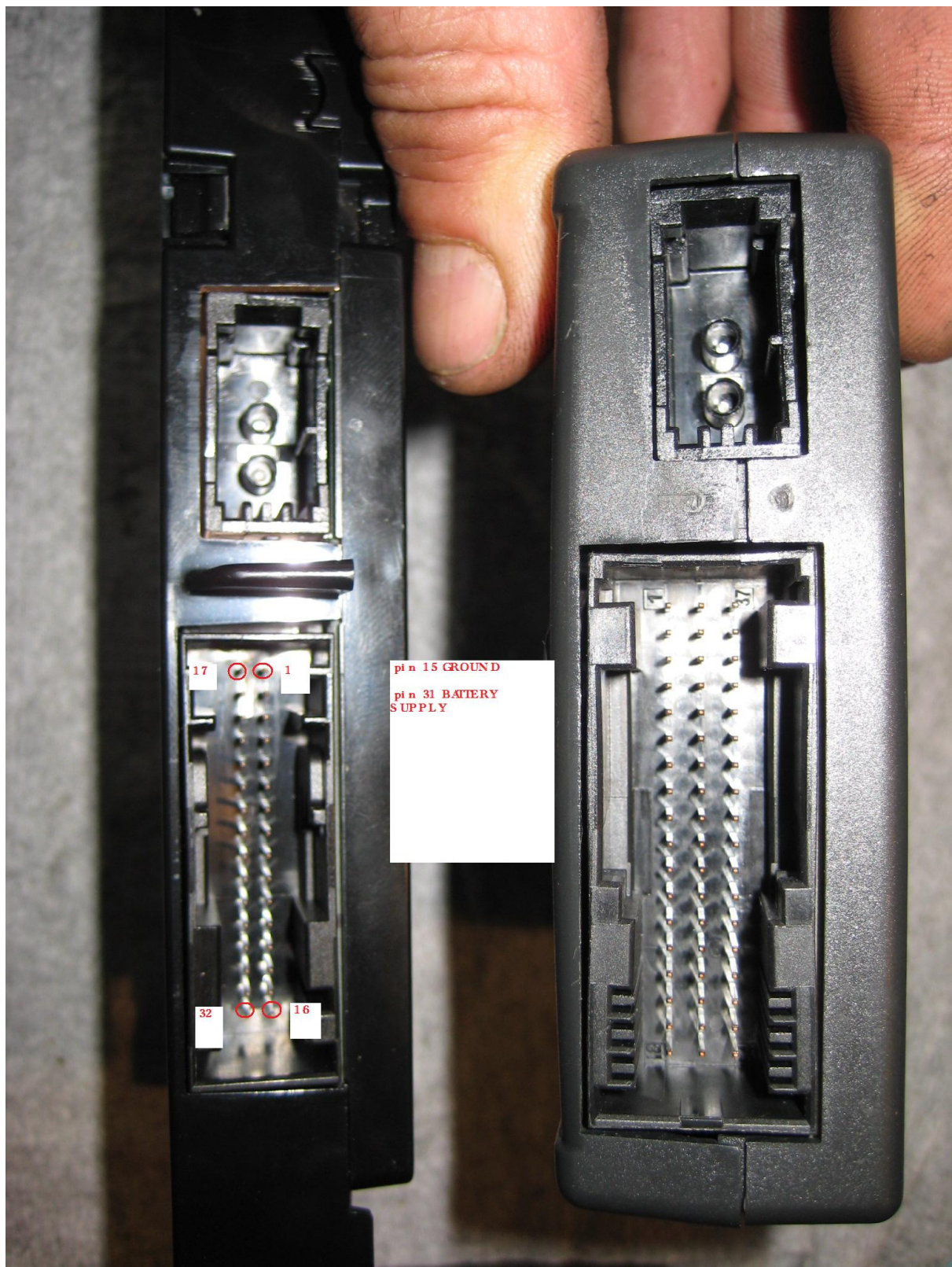


This plugs into the fuse box in fuse 58 . The original fuse goes back into the new piggy back fuse holder and i would use a 3 or 5 amp for the Bluetooth module .

This goes to pin 31 on the Bluetooth module .

You just need to get an earth for the negative side of the power . There are earth studs down behind the panel which has the bonnet release handle on it .

Earth / neg needs to go to pin 15 on the Bluetooth module



Fit the trim back in place and thats the most and power done .