

# Locks and Alarms

## Emergency locking/unlocking

Under a removable cap on the left front door outer handle, there is an emergency-use door lock.

### Removing the cap



H5379G

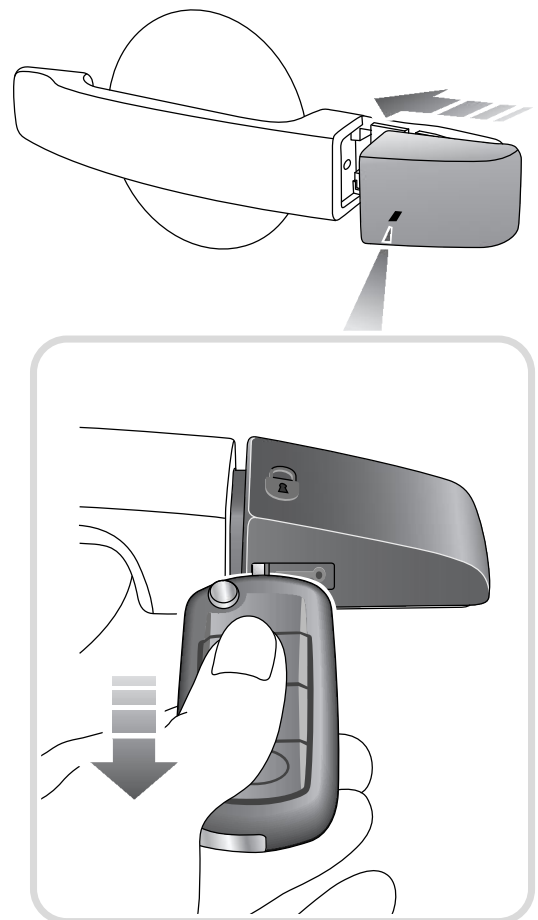
1. Insert the key fully into the slot under the handle cap.
2. The cap can now be removed at the forward edge and unhooked from the rear edge.

3. Remove the key from the slot and use it in the emergency lock. Turn the key anti-clockwise to unlock.

**Note:** If the alarm was previously armed, the alarm will sound when the door is unlocked. To disable the alarm, insert the key into the starter switch.

4. To lock the door, turn the key clockwise. The alarm system will not be armed.

### Refitting the cap



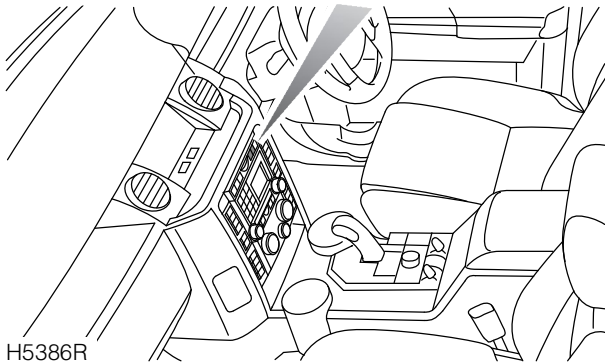
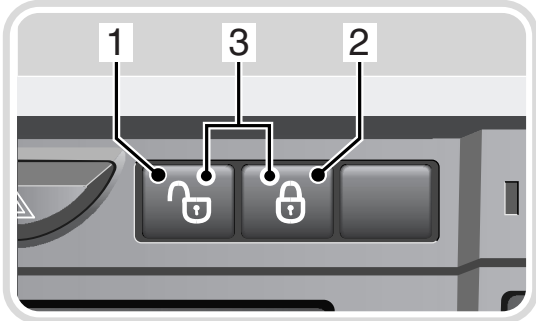
H5775G

1. Insert the key fully into the slot in the handle cap.
2. Hook the cap onto the lock barrel at the rear edge.
3. Push the front edge of the cap onto the panel.

# Locks and Alarms

4. Remove the key from the slot.

## Master lock and unlock switches



H5386R

1. Pressing the master unlock switch will unlock all of the doors.
2. Pressing the master lock switch will lock all of the doors.  
**Note:** If the locks have already been superlocked using the key, the switch will not release the locks.
3. Simultaneously pressing both the master lock and unlock switches for three seconds will cause the upper tailgate to release. This is an emergency release function in case the tailgate exterior release switch becomes inoperative.

## Speed-related locking

This security feature locks all the doors automatically when the vehicle speed exceeds 8 km/h (5 mph).

**Note:** The speed at which speed-related locking occurs is not selectable by the driver. Any presses of the master lock or unlock switches will over-ride the speed locking function and will remain in that state for the whole journey.



Speed-related locking can be selected or deselected by a Land Rover Dealer/Authorised Repairer or by the driver.

See **Trip computer settings, 81.**

## Automatic relock

If the vehicle is unlocked using the remote control and one minute elapses before a door, the tailgate or the bonnet is opened, or the key is inserted into the starter switch, the vehicle will re-lock and the alarm will re-arm.

## Automatic unlocking

If the vehicle is involved in a collision forceful enough to cause a restraints device to deploy, all door locks will automatically be unlocked and the hazard warning lamps will start to flash. The interior lamps will also illuminate.