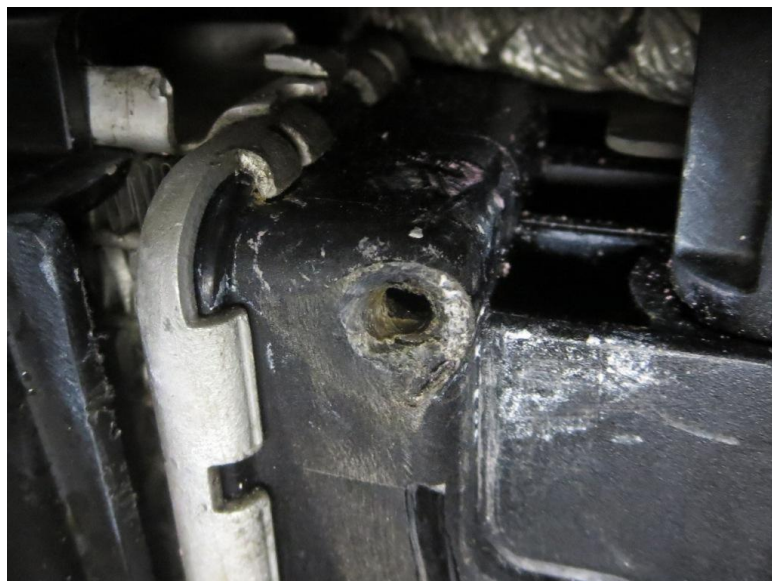




1. Broken fitting. 5mm to 6.5mm tapered I.D.



2. The hole left in the radiator was 4mm diameter



3. Hole after filing & grinding a tapered lead for the drill bit



4. Drilled in stages to 11/32" to suit a 1/8" BSPP tap



5. 1/4" BSP female to 1/8" BSP male stainless steel reducer



6. 3/8" x 1/4" BSP brass hose tail



7. 'LOCTITE' 567 thread sealant



8. Assembled fittings



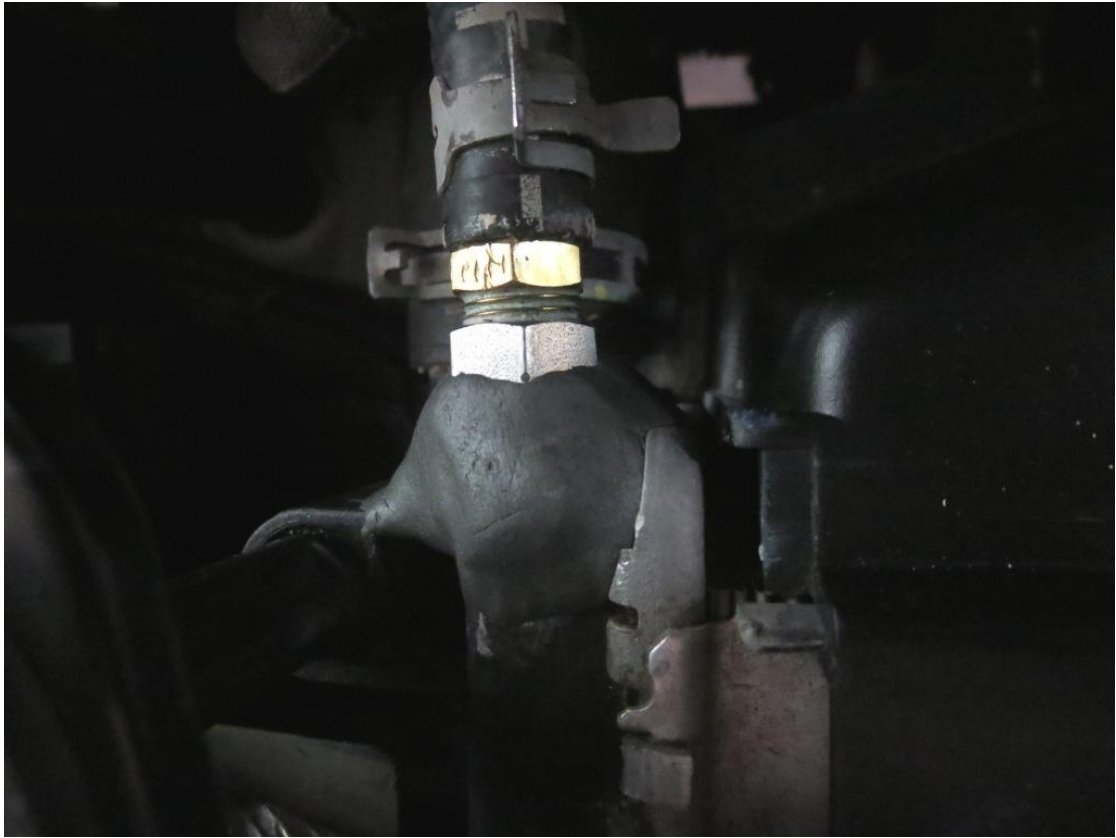
9. 1/8" BSPP tap showing approximate tapping depth from end to tape



10. Fitting screwed in place with thread sealant



11. 'Dynasteel' Epoxy Putty



12. Success!

