

tayaste oem tv install

Remove RH Rear Quarter Panel Trim following this Guide

[Here](#)



Next Remove Lower B Pillar Trim ( Just Pulls Off )



tayaste oem tv install

Then Remove Floor / Carpet Trim ( Again Just Pulls Off )



Pull Drivers Footwell Trim off ( Just enough to give you a bit of room )



## tayaste oem tv install

Now Run the Co-Ax cable from here to the rear of the Car (Tucking the Cable under the weather strip, out of the way )



Now Remove H trim ( 4 spring clips hold it in place )



## tayaste oem tv install

Remove Sat Nav (4 phillips Screws)

Connect Fakra to Green input on the back of the nav unit and run the cable to under the steering column to the footwell and connect to the co-ax



Next remove D Pillar trims by Pulling the clips

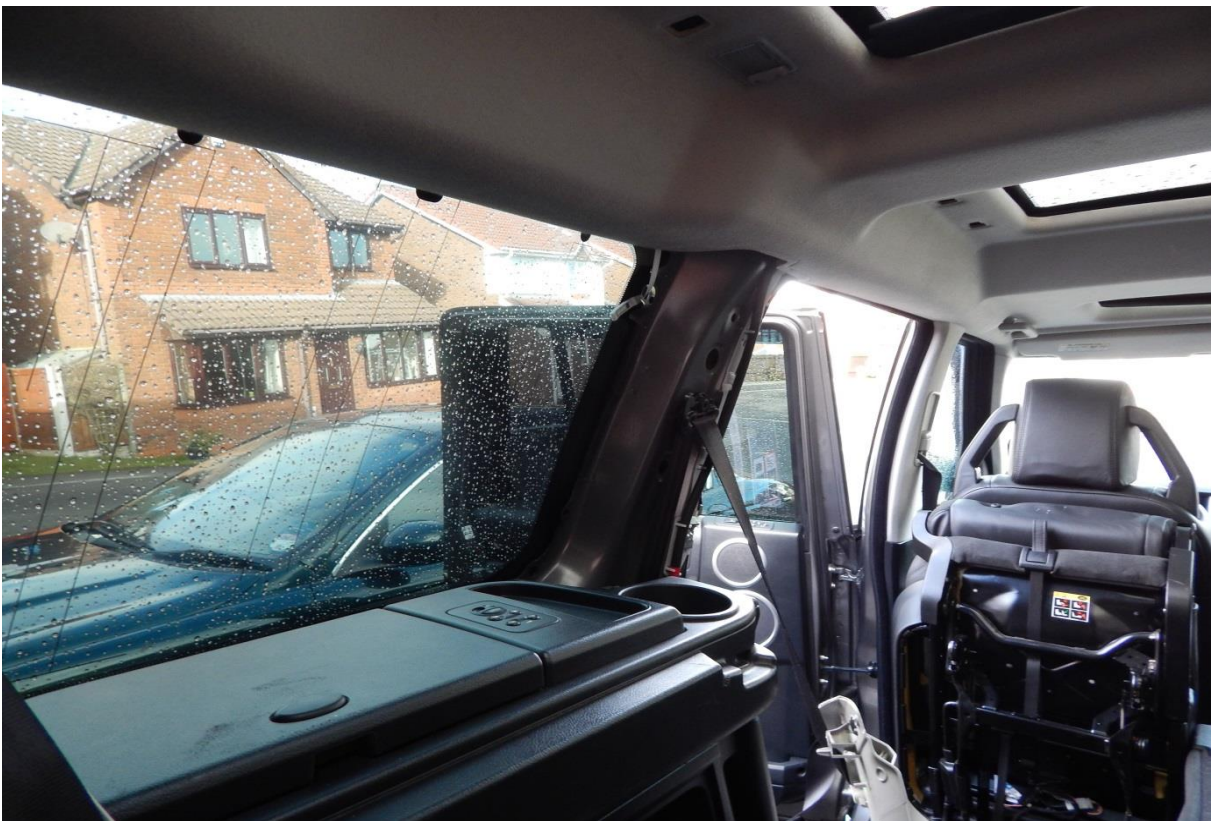


tayaste oem tv install

Remove row 2 and 3 Grab Handles



Remove C Pillar trim ( Remove air bag small plastic cover to gain access to bolt )



## tayaste oem tv install

Next Remove Roof lining trim by Removing the two push in type plugs and then the trim releases on clips, disconnect light and then lower the rear of the headlining.



Under the headlining you will have to fit the four amps and route the aerial cable.

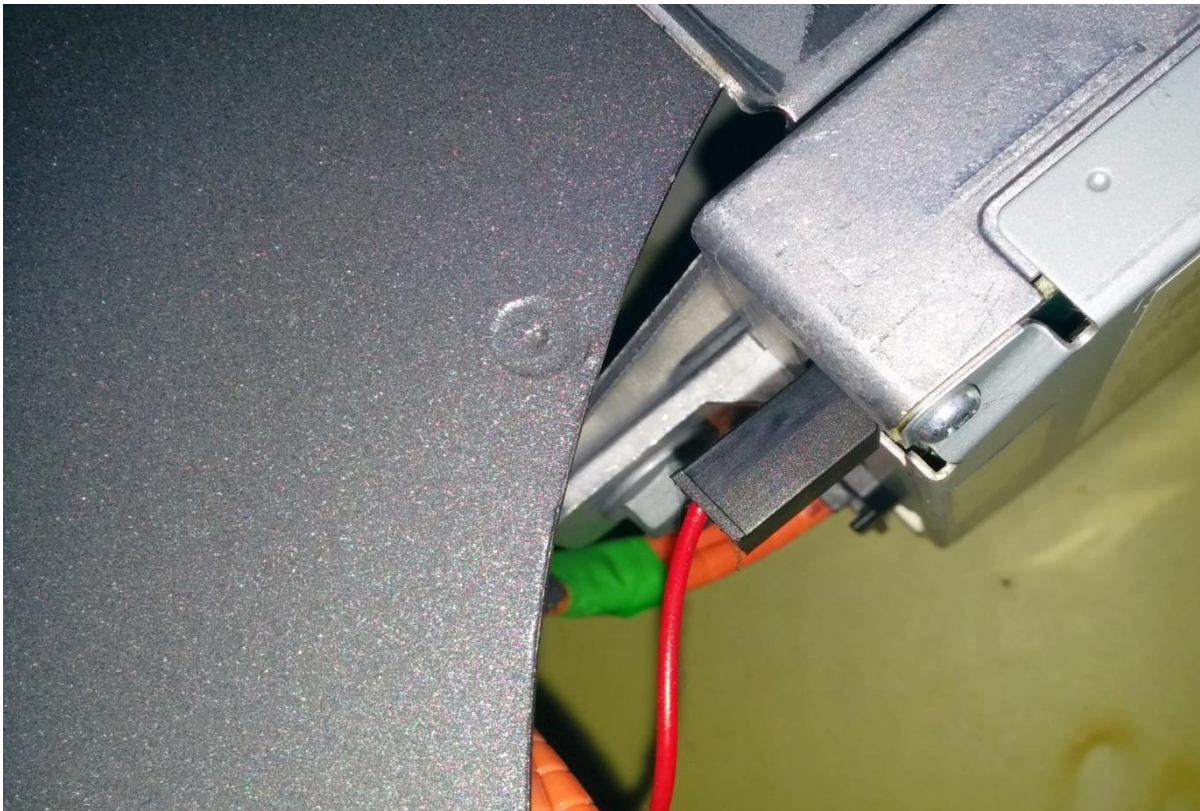


## tayaste oem tv install

Route the aerial cable from where you will fit the tuner, behind the driver D Pillar to the amps and connect them up



Now we need Power ( Thanks to jamieg7762 and wiggs for the advice ) I took it from the TMC Module

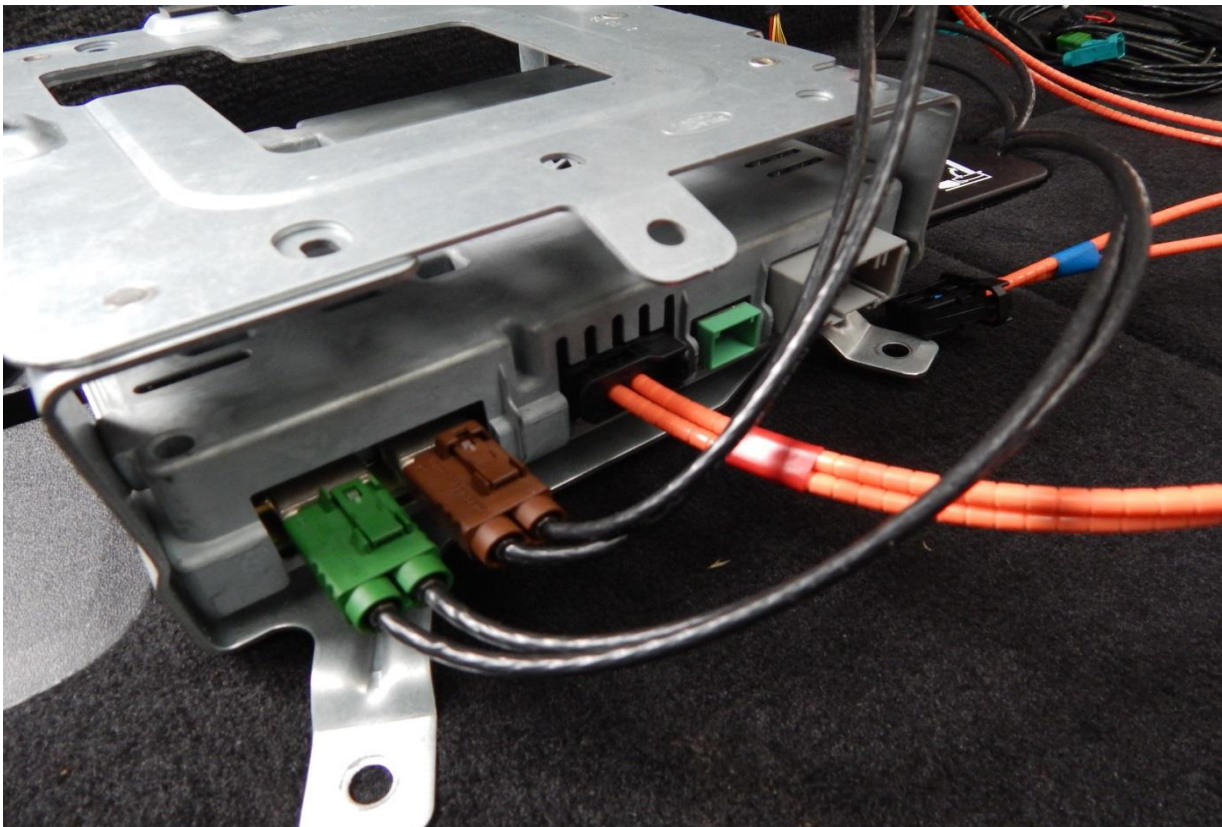


## tayaste oem tv install

Next Join the Most into the system I used the Bluetooth Module



Now connect it all up to the tuner





tayaste oem tv install

Tv Pins 1 +, 2 -, 4 Video out, 5 video out ground ( Again thanks wiggs )



Bolt tuner to Side of car



# tayaste oem tv install

Enable TV function on Faultmate / IID or Similar



Hit the TV Button



tayaste oem tv install

Then Tidy Cables and refit all you've destroyed :)

